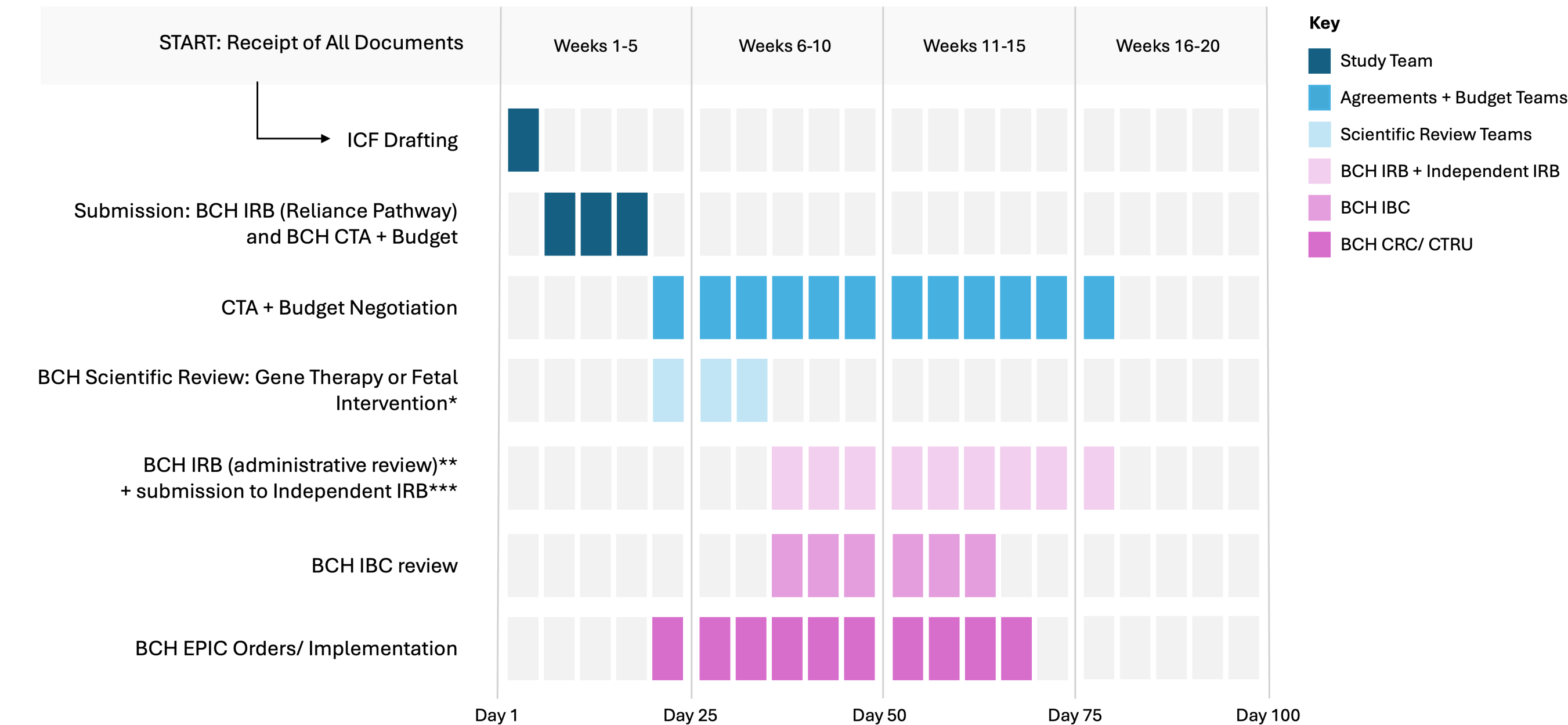


# Reliance Submission Workflow (Target <100 Days)



\*Gene Therapy and Fetal Intervention protocols must undergo BCH scientific review and receive approval before the BCH IRB Reliance review can begin.

\*\*BCH IRB reliance on an external (independent) IRB is not finalized until all required ancillary reviews are complete. Research cannot begin until the reliance is accepted in BCH eRA (CHeRP). This acceptance is held until both independent IRB approval is secured, and all ancillary reviews are completed.

\*\*\* Timelines for IRB review vary depending on the sponsor, the study team, and the responsiveness of the independent IRB.